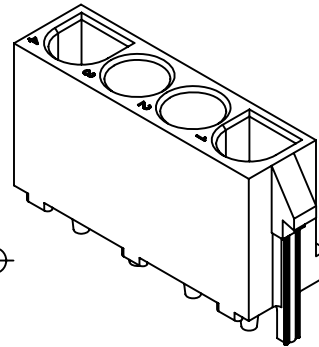
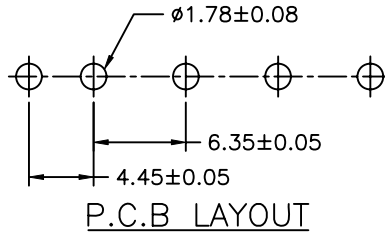
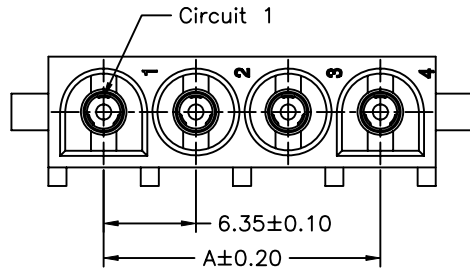


1

2

3

4



P/N LEGEND

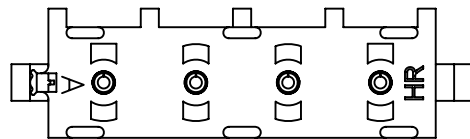
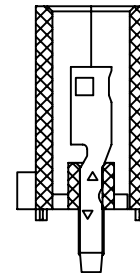
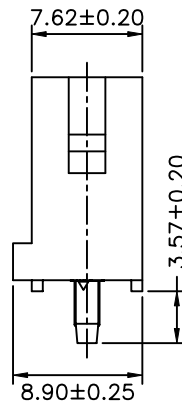
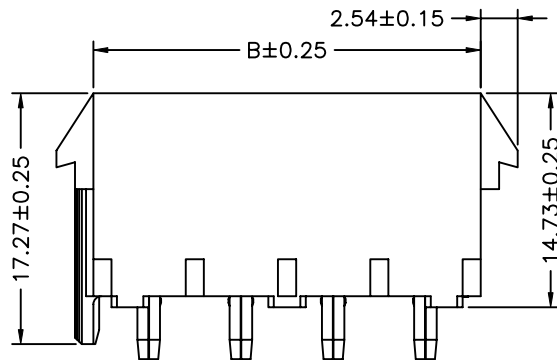
C6350	WV-F-XP	FV0
①	② ③ ④	⑤
① Series No.	② Connector type: WV=Vertical	③ Mounting type: F=With foot
④ No. of circuits	⑤ FV0=F type, Nylon 66,UL94V-0, White	

SPECIFICATIONS

Current Rating: 15A AC,DC
 Voltage Rating: 600V AC,DC
 Temperature Range: -25°C ~ +85°C
 Contact Resistance: 3.5mΩ Max
 Insulation Resistance: 2900V AC/minute
 Pin Material: Brass/Tin-plated
 Material: Nylon 66,UL94V-0
 Color: White

Ordering Information & Dimensions

PART NO.	Dimensions	
	A	B
C6350WV-F-02PFV0	6.35	13.97
C6350WV-F-03PFV0	12.70	20.32
C6350WV-F-04PFV0	19.05	26.67
C6350WV-F-05PFV0	25.40	33.02
C6350WV-F-06PFV0	31.75	39.37
C6350WV-F-08PFV0	44.45	52.07



							燦達電子工業股份有限公司 JOINT TECH ELECTRONIC IND. CO., LTD.	
				UNIT	SCALE	SHEET		TITLE: 6.35mm PITCH 180° SINGLE ROW WAFER, POLARIZING PEG, FEMALE TYPE
				mm	1 : 1	1 of 1		
				DRAWN BY	APPROVED BY		DRAW NO. : C6350WV-F-XPV0	
				李勤	董正一			
				2006.02.25	2006.02.25		REV. A2	
				GENERAL TOLERANCE				
A2	EN1703020002	2017.03.13	賴永強	X. X±0.25	ANGLE±			
A1	REVISE	2007.09.14	歐陽小強	X. XX±0.15				
A0	NEW RELEASE	2006.02.25	李勤	X. XXX±0.05				
REV.	DESCRIPTION	DATE	NAME					