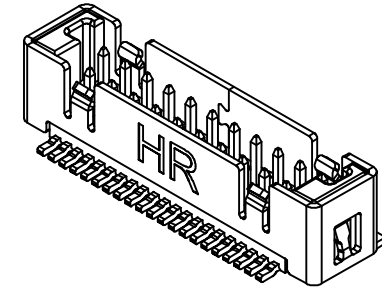
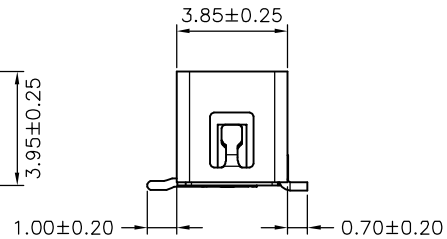
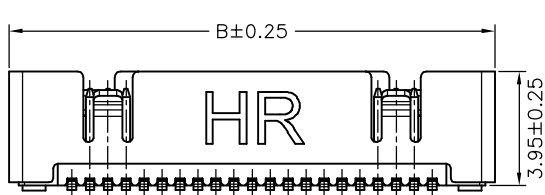


SUGGESTED PCB LAYOUT  
(COMPONENT SIDE)



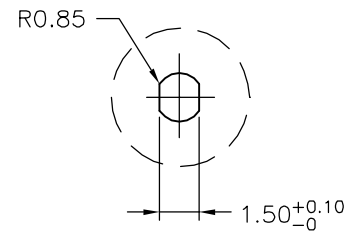
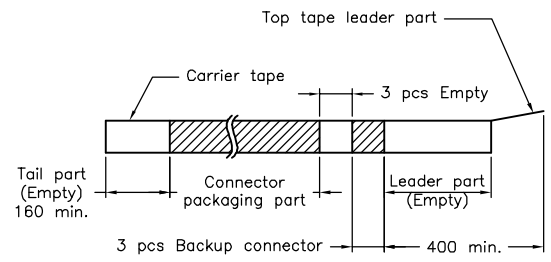
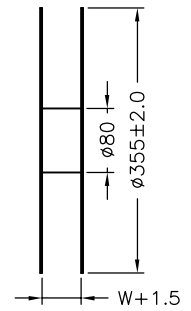
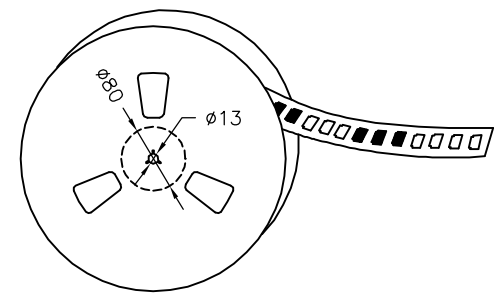
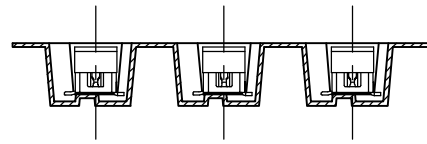
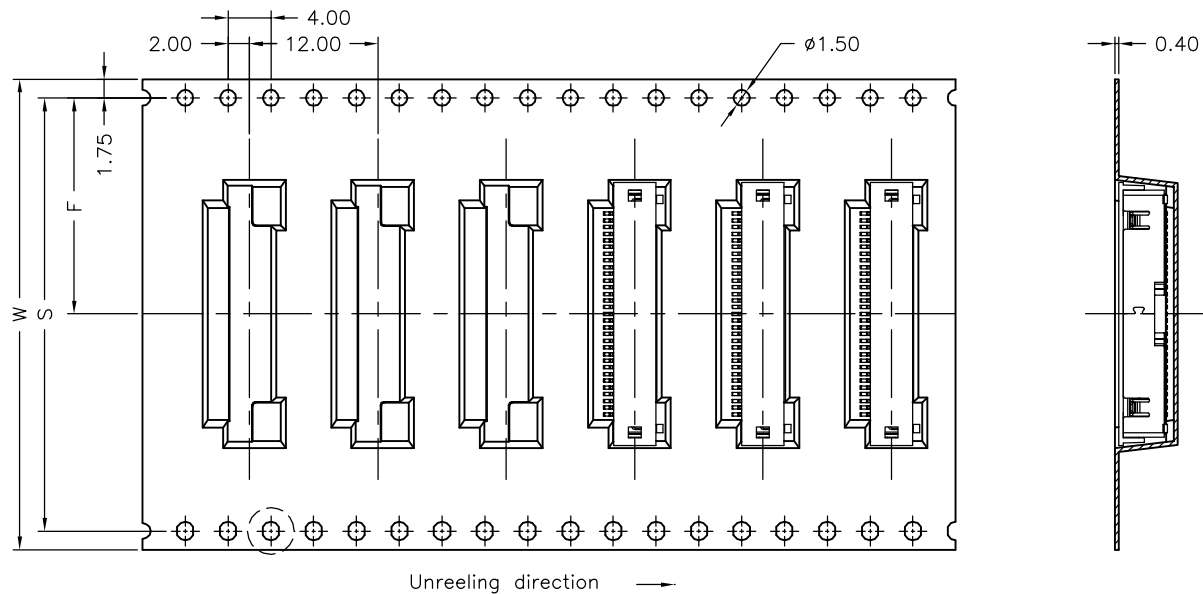
**SPECIFICATIONS**

Current Rating: 1A AC,DC  
 Voltage Rating: 200V AC,DC  
 Temperature Range: -25°C ~ +85°C  
 Contact Resistance: 40mΩ Max.  
 Insulation Resistance: 100MΩ Min.  
 Withstanding Voltage: 500V AC/minute  
 Pin Material: Phosphor Bronze/Gold-plated 3u"  
 Shell: Phosphor Bronze/Tin-plated  
 Cap: Nylon 6T,UL94V-0,Natural(Black)  
 Material: Nylon 6T,UL94V-0  
 Color: Natural(Black)

**Ordering Information & Dimensions**

PART NO.	Dimensions	
	A	B
A1256WV-S-21P	12.50	16.85
A1256WV-S-31P	18.75	23.10

			UNIT	SCALE	SHEET	TITLE:
			mm		1 of 2	
			DRAWN BY	APPROVED BY		1.25mm PITCH 180° DUAL ROW WAFER- SMT TYPE, SHELL, W/O BOSS
			董正一 2005.10.11	董正一 2005.10.11		
			GENERAL TOLERANCE			DRAW NO.: A1256WV-S-XP
B2	REVISE	2007.11.06	X.X±0.25	ANGLE±		
B1	REVISE	2007.09.07	X.XX±0.15			
B0	NEW RELEASE	2006.05.06	X.XXX±0.05			
REV.	DESCRIPTION	DATE				REV. B2



Number of Contacts	W±0.3	F±0.1	S±0.1	Q'ty/Reel
21P	32	14.20	28.40	1,000
31P	44	20.20	40.40	1,000

			UNIT	SCALE	SHEET	TITLE:
			mm		2 of 2	
			DRAWN BY		APPROVED BY	1.25mm PITCH 180° DUAL ROW WAFER-SMT TYPE, SHELL, W/O BOSS, TAPING SPEC.
			歐陽小強		謝瑞清	
			2007.08.09		2007.08.09	
			GENERAL TOLERANCE			
A2	REVISE	2007.11.05				DRAW NO. : A1256WV-S-XP
A1	REVISE	2007.09.07	X.X±0.25	ANGLE±		
A0	NEW RELEASE	2007.08.09	X.XX±0.15			
REV.	DESCRIPTION	DATE	X.XXX±0.05			REV. A2