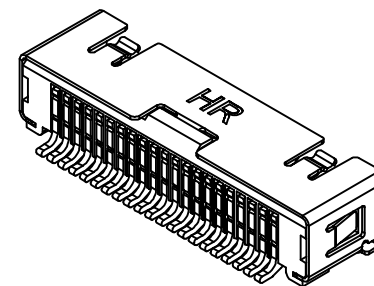
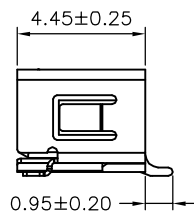
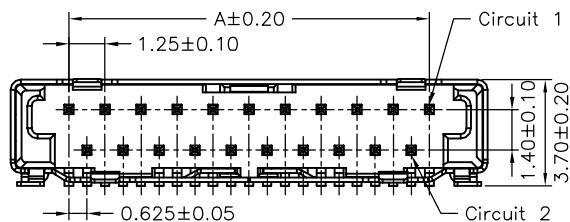


SUGGESTED PCB LAYOUT
(COMPONENT SIDE)



SPECIFICATIONS

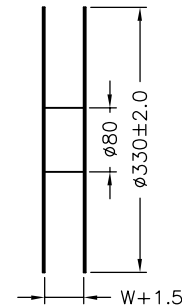
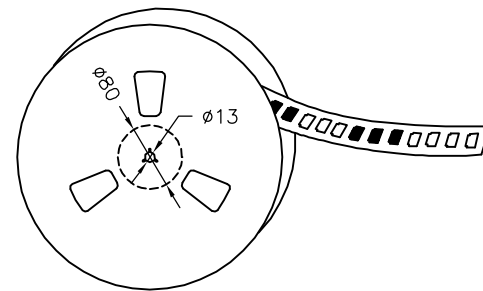
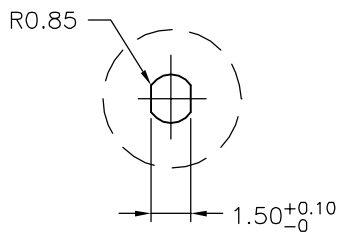
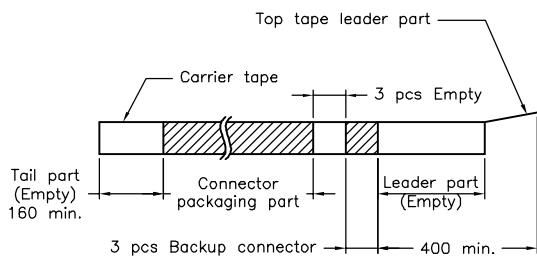
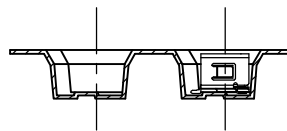
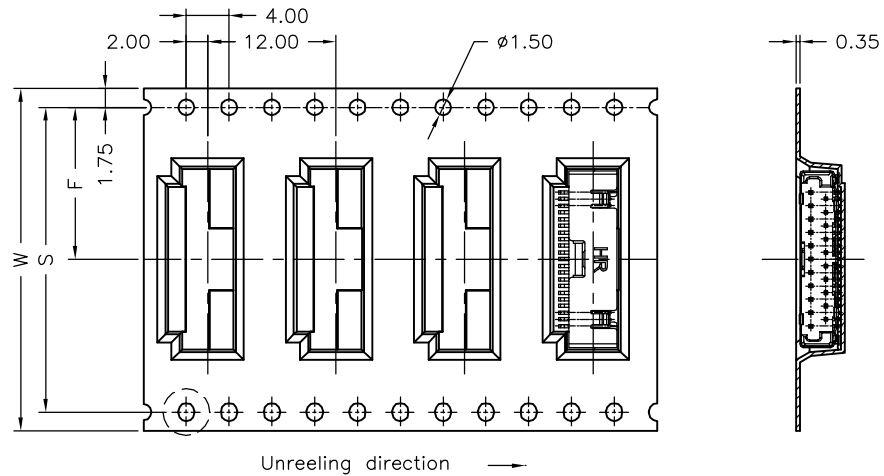
Current Rating: 1A AC,DC
 Voltage Rating: 200V AC,DC
 Temperature Range: -25°C ~ +85°C
 Contact Resistance: 40mΩ Max.
 Insulation Resistance: 100MΩ Min.
 Withstanding Voltage: 500V AC/minute
 Pin Material: Phosphor Bronze/Gold-plated 3u”
 Shell: Phosphor Bronze/Tin-plated
 Material: Nylon 6T,UL94V-0
 Color: Natural(Black)



Ordering Information & Dimensions

PART NO.	Dimensions	
	A	B
A1256WR-S-21P	12.50	16.55
A1256WR-S-31P	18.75	22.80
A1256WR-S-41P	25.00	29.05

UNIT	SCALE	SHEET	TITLE:				
mm		1 of 2	1.25mm PITCH 90° DUAL ROW WAFER- SMT TYPE, SHELL				
DRAWN BY	APPROVED BY					DRAW NO.:	
董正一 2005.10.11	董正一 2005.10.11					A1256WR-S-XP	
GENERAL TOLERANCE						REV. BO	
BO	NEW RELEASE	2006.05.06	X. X±0.25	ANGLE±			
REV.	DESCRIPTION	DATE	X. XX±0.15				
			X. XXX±0.05				



Number of Contacts	W±0.3	F±0.1	S±0.1	Q'ty/Reel
21P	32	14.20	28.40	1,000
31P	44	20.20	40.40	1,000
41P	44	20.20	40.40	1,000

				JOINT TECH ELECTRONIC IND. CO., LTD. JOY DAY INDUSTRIAL CO., LTD.	
UNIT	SCALE	SHEET	TITLE:		
mm		2 of 2	1.25mm PITCH 90° DUAL ROW WAFER- SMT TYPE, SHELL, TAPING SPEC.		
DRAWN BY 歐陽小強 2007.08.09		APPROVED BY 謝瑞清 2007.08.09			
GENERAL TOLERANCE					
A0	NEW RELEASE	2007.08.09	X. X±0.25	ANGLE±	
REV.	DESCRIPTION	DATE	X. XX±0.15	DRAW NO. : A1256WR-S-XP	
			X. XXX±0.05		