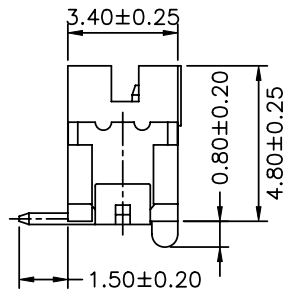
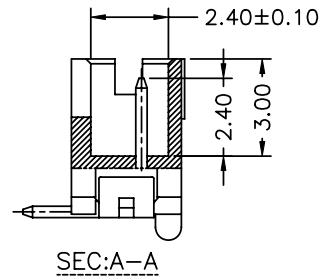
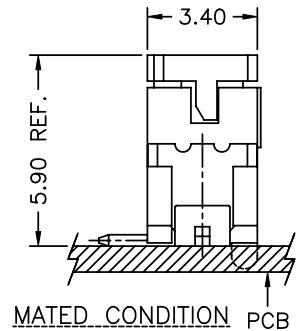
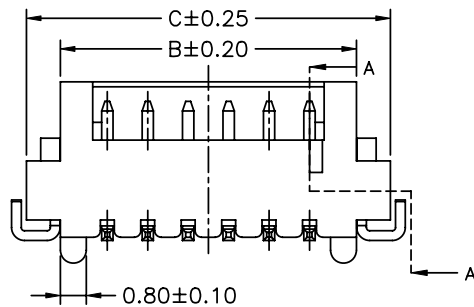
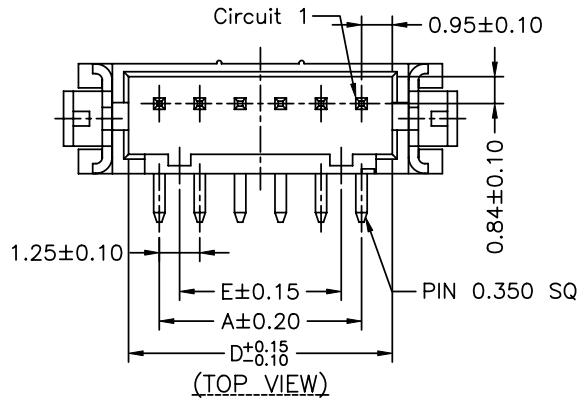
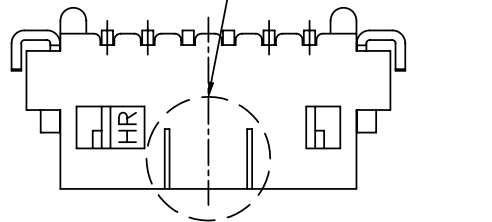


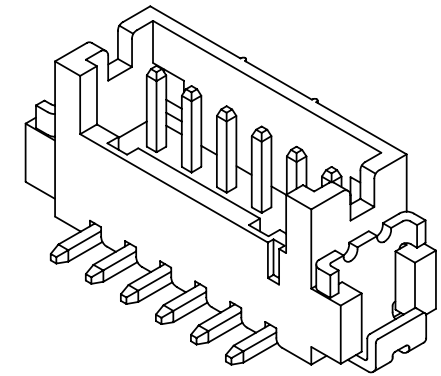
TO MAKE SURE THE CAP CAN BE PUT ON THE MIDPOINT FOR 04P TO 15P.



P/N LEGEND

A1252	WV	SF	XP	N	X	X	G1	X	00	L
①	②	③	④	⑤	⑥	⑦	⑧	⑨	⑩	⑪

① Series No.
 ② Connector type: WV=Vertical
 ③ Mounting type: SF=SMT with boss
 ④ No. of circuits
 ⑤ N=Halogen Free
 ⑥ Material: 6=Nylon 6T; L=LCP
 ⑦ Color: B=Black; N=Natural(Beige)
 ⑧ Plating code for contacts: G1=Gold-flash
 ⑨ Plating code for solder tabs: T=Matte Tin-plated; G=Gold-flash
 ⑩ Option code: 00=Standard
 ⑪ Packing code: L=Tape & Reel(With Cap)



SPECIFICATIONS

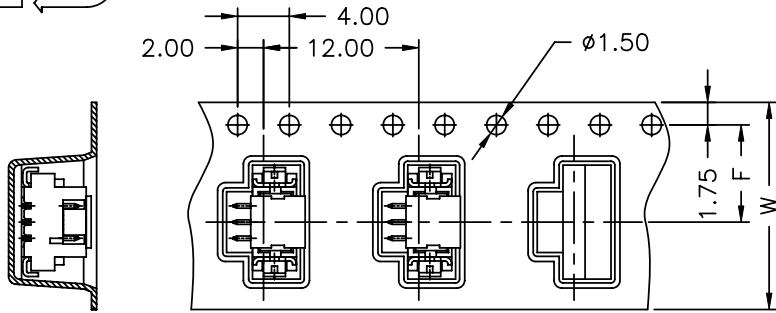
Current Rating: 1A AC,DC
 Voltage Rating: 150V AC,DC
 Temperature Range: -25°C ~ +85°C
 Contact Resistance: 30mΩ Max.
 Insulation Resistance: 500MΩ Min.
 Withstanding Voltage: 500V AC/minute
 Pin Material: Brass
 Solder Tabs: Phosphor Bronze

Circuit No.	Dimensions				
	A	B	C	D	E
02P	1.25	4.15	6.25	3.15	---
03P	2.50	5.40	7.50	4.40	1.25
04P	3.75	6.65	8.75	5.65	2.50
05P	5.00	7.90	10.00	6.90	3.75
06P	6.25	9.15	11.25	8.15	5.00
07P	7.50	10.40	12.50	9.40	6.25
08P	8.75	11.65	13.75	10.65	7.50
09P	10.00	12.90	15.00	11.90	8.75
10P	11.25	14.15	16.25	13.15	10.00
11P	12.50	15.40	17.50	14.40	11.25
12P	13.75	16.65	18.75	15.65	12.50
13P	15.00	17.90	20.00	16.90	13.75
14P	16.25	19.15	21.25	18.15	15.00
15P	17.50	20.40	22.50	19.40	16.25

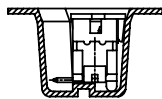
							燦達電子工業股份有限公司 JOINT TECH ELECTRONIC IND. CO., LTD.	
				UNIT	SCALE	SHEET		TITLE:
				mm	1 : 1	1 of 2		1.25mm PITCH 180° SINGLE ROW WAFER- SMT TYPE
				DRAWN BY		APPROVED BY		
				陳錦展		董正一		
				2010.12.01		2010.12.01		DRAW NO. : A1252WV-SF-XPXXXXXXX
				GENERAL TOLERANCE				
A2	EN1202060018	2012.02.06	陳錦展	X.X±0.25	ANGLE±		REV. A2	
A1	EN1106240218	2011.06.24	陳敏	X.XX±0.15				
A0	NEW RELEASE	2010.12.01	陳錦展	X.XXX±0.05				
REV.	DESCRIPTION	DATE	NAME					



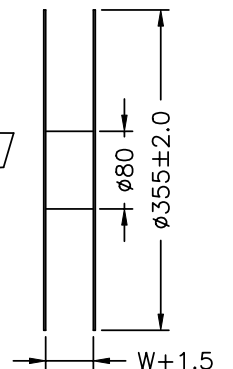
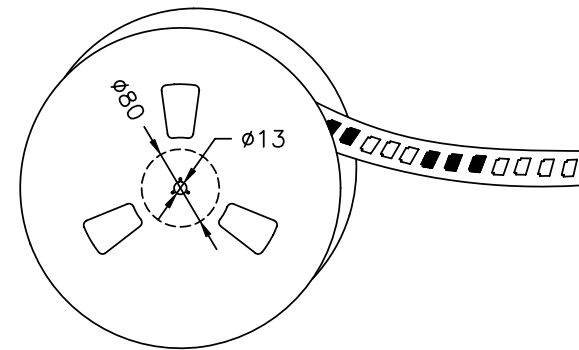
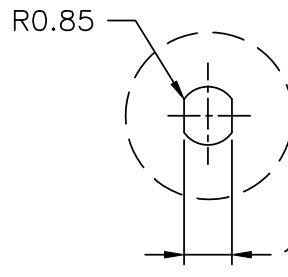
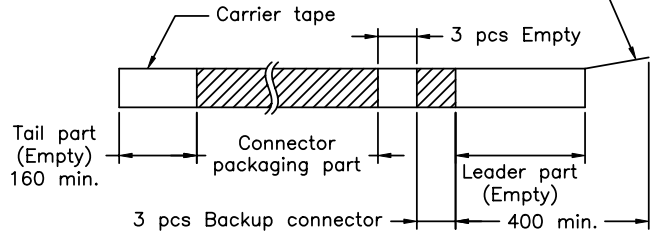
02~08 Contacts



Unreeling direction →

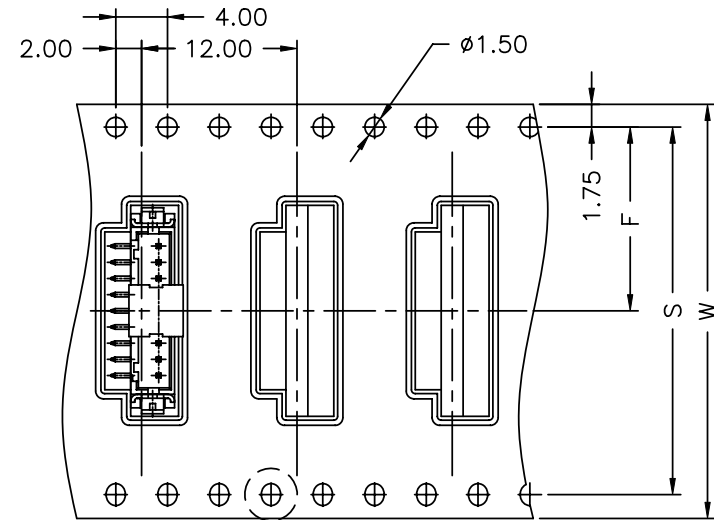


Top tape leader part



Unreeling direction →

09~15 Contacts



Number of Contacts	W±0.3	F±0.1	S±0.1	Q'ty/Reel
02P	16	7.50	/	1,000
03P	16	7.50		1,000
04P	24	11.50		1,000
05P	24	11.50		1,000
06P	24	11.50		1,000
07P	24	11.50		1,000
08P	24	11.50		1,000
09P	32	14.20		28.40
10P	32	14.20	28.40	1,000
11P	32	14.20	28.40	1,000
12P	32	14.20	28.40	1,000
13P	44	20.20	40.40	1,000
14P	44	20.20	40.40	1,000
15P	44	20.20	40.40	1,000

NOTE:

Material: Transparent
Anti-static Polystyrene.

							燦達電子工業股份有限公司 JOINT TECH ELECTRONIC IND. CO., LTD.	
				UNIT	SCALE	SHEET		TITLE:
				mm	1 : 1	2 of 2		1.25mm PITCH 180° SINGLE ROW WAFER- SMT TYPE TAPING SPEC.
				DRAWN BY		APPROVED BY		
				陳錦展		董正一		
				2010.12.01		2010.12.01		
				GENERAL TOLERANCE				
A2	EN1202060018	2012.02.06	陳錦展	X.X±0.25		ANGLE±		
A1	EN1106240218	2011.06.24	陳敏	X.XX±0.15				
A0	NEW RELEASE	2010.12.01	陳錦展	X.XXX±0.05				
REV.	DESCRIPTION	DATE	NAME					
							DRAW NO.:	REV.
							A1252WV-SF-XPXXXXXXX	A2