

P/N LEGEND

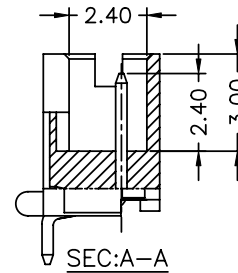
A1252 WR-SF-XP XXX  
 ① ② ③ ④ ⑤

- ① Series No.
- ② Connector type: WR=Right angle
- ③ Mounting type: SF=SMT with boss
- ④ No. of circuits
- ⑤ Option code:  
 D01=Contacts/Gold-flash and Solder tabs/Gold-flash

SPECIFICATIONS

Current Rating: 1A AC,DC  
 Voltage Rating: 150V AC,DC  
 Temperature Range: -25°C ~ +85°C  
 Contact Resistance: 30mΩ Max.  
 Insulation Resistance: 500MΩ Min.  
 Withstanding Voltage: 500V AC/minute  
 Pin Material: Brass/Gold-flash  
 Solder Tabs: Phosphor Bronze/Gold-flash  
 Material: Nylon 6T,UL94V-0  
 Color: Natural(Beige)

Circuit No.	Dimensions		
	A	B	C
02P	1.25	4.15	6.25
03P	2.50	5.40	7.50
04P	3.75	6.65	8.75
05P	5.00	7.90	10.00
06P	6.25	9.15	11.25
07P	7.50	10.40	12.50
08P	8.75	11.65	13.75
09P	10.00	12.90	15.00
10P	11.25	14.15	16.25
11P	12.50	15.40	17.50
12P	13.75	16.65	18.75
13P	15.00	17.90	20.00
14P	16.25	19.15	21.25
15P	17.50	20.40	22.50



燦達電子工業股份有限公司  
 JOINT TECH ELECTRONIC IND. CO., LTD.

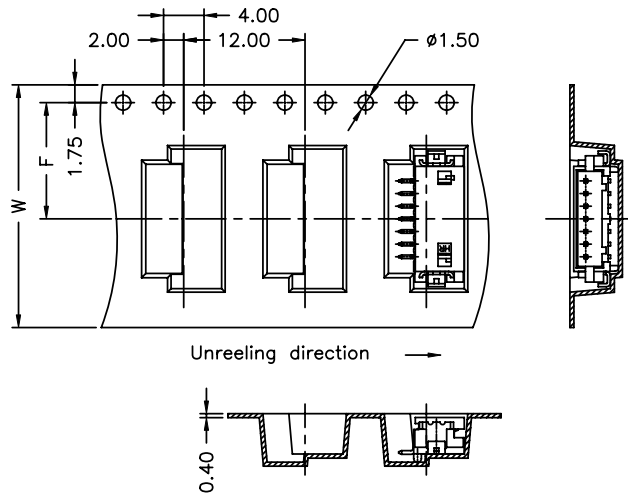
UNIT: mm SCALE: 1:1 SHEET: 1 of 2  
 DRAWN BY: 李勤 DATE: 2006.05.31  
 APPROVED BY: 董正一 DATE: 2006.05.31

TITLE:  
 1.25mm PITCH  
 90° SINGLE ROW WAFER-SMT TYPE  
 DRAW NO.: A1252WR-SF-XP REV. A2

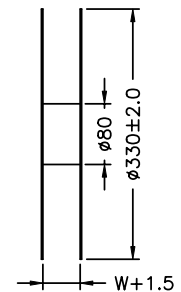
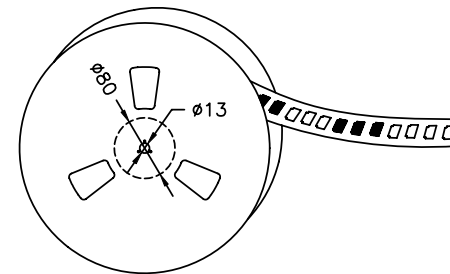
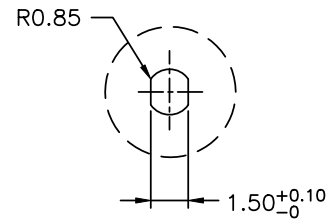
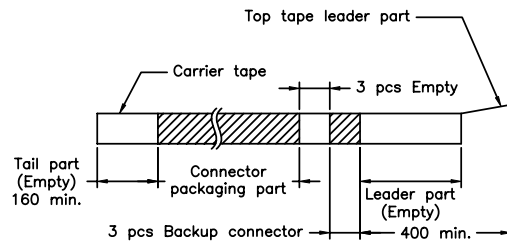
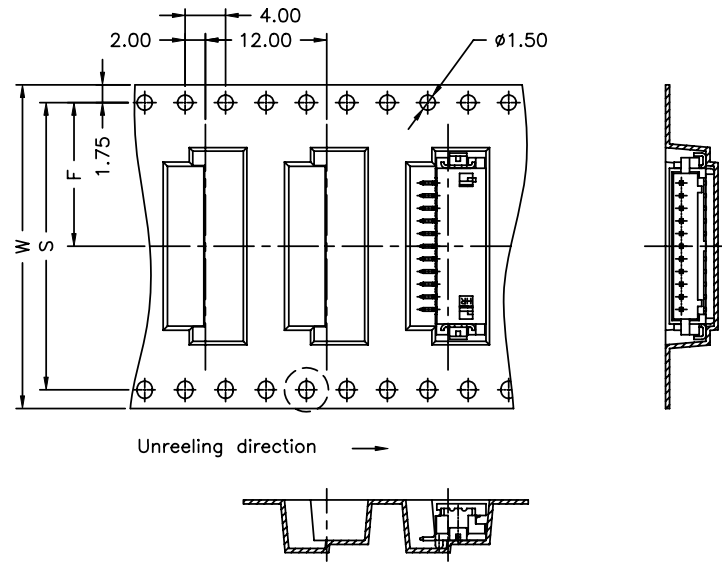
REV.	DESCRIPTION	DATE	NAME
A2	EN1202060018	2012.02.06	陳錦展

GENERAL TOLERANCE  
 X.X±0.25 ANGLE±  
 X.XX±0.15  
 X.XXX±0.05

02~08 Contacts



09~15 Contacts



Number of Contacts	W±0.3	F±0.1	S±0.1	Q'ty/Reel
02P	16	7.50	/	1,000
03P	16	7.50		1,000
04P	24	11.50		1,000
05P	24	11.50		1,000
06P	24	11.50		1,000
07P	24	11.50		1,000
08P	24	11.50		1,000
09P	32	14.20		28.40
10P	32	14.20	28.40	1,000
11P	32	14.20	28.40	1,000
12P	32	14.20	28.40	1,000
13P	32	14.20	28.40	1,000
14P	44	20.20	40.40	1,000
15P	44	20.20	40.40	1,000

NOTE:  
Material: Transparent  
Anti-static Polystyrene.

				燦達電子工業股份有限公司 JOINT TECH ELECTRONIC IND. CO., LTD.	
UNIT	SCALE	SHEET		TITLE:	
mm	1 : 1	2 of 2			
DRAWN BY		APPROVED BY		1.25mm PITCH 90° SINGLE ROW WAFER- SMT TYPE TAPING SPEC.	
李勤		董正一			
2006.05.31		2006.05.31		DRAW NO. : A1252WR-SF-XP	
GENERAL TOLERANCE		ANGLE±			
A2	EN1202060018	2012.02.06	陳錦展	X.X±0.25	
REV.	DESCRIPTION	DATE	NAME	X.XX±0.15 X.XXX±0.05	